

Corporate Social Responsibility (CSR) has been at the heart of Lectra's identity since it was founded.

By nature, our technologies and solutions facilitate reducing CO₂ emissions through minimizing material waste. **Today, we are going even further.** We are reinforcing our commitment of making CSR a central pillar of our strategy through 5 main areas of action.

01

DRIVING
UNCOMPROMISING
ETHICAL STANDARDS

02

DESIGNING
ECO-RESPONSIBLE
OFFERS

03

PROMOTING AN
INCLUSIVE, DIVERSE
AND VIBRANT
WORK CULTURE

04

REDUCING
THE ECOLOGICAL
FOOTPRINT
OF OUR ACTIVITIES

05

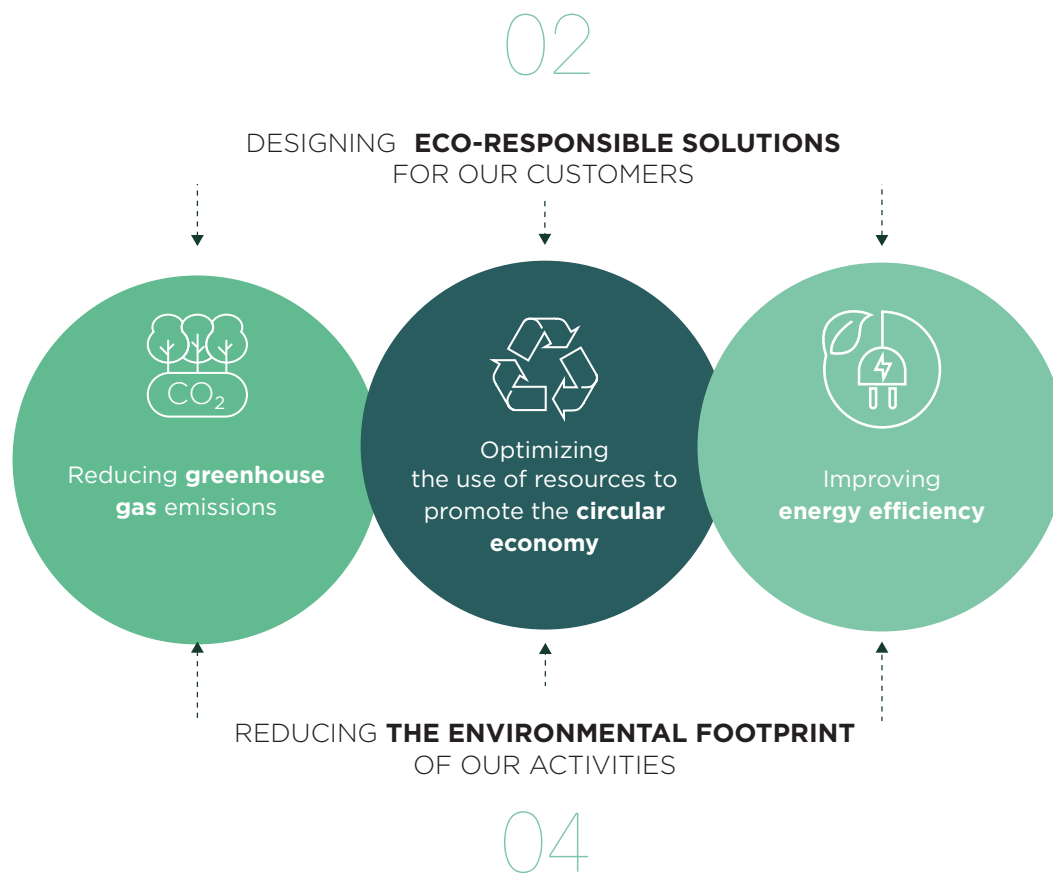
SUPPORTING
FUTURE
GENERATIONS

ENVIRONMENTAL POLICY

As individuals, across all levels of the Group, we all need to take environmental issues into account, now more than ever. Even more so as they are now a determining factor in our business relations and a strong expectation among our stakeholders.

That is why Lectra is rolling out an Environmental Management System (EMS) throughout the Group that is fully integrated with our CSR approach. With a structured framework and a dedicated budget, the EMS sets out our environmental approach around a commitment to compliance with applicable regulations and the achievement of target objectives. These solid foundations enable us to draw up and implement action and awareness plans with a focus on continuous improvement.

We are committed to reducing greenhouse gases, optimizing resources for a circular economy and improving energy efficiency **by designing eco-responsible solutions for our customers and reducing the environmental footprint of our activities.**



Each of the policy's commitments is broken down in the Environmental Management System into qualitative performance objectives, the progress of which is monitored through regular reporting. Fully integrated into Lectra's strategy, the environmental policy and associated improvement objectives are reviewed every three years.



AT LECTRA, WE ARE COMMITTED

In our practices and in all of our activities, we have consistently endeavored to be a responsible economic player. We are committed to this proactive policy to improve the environmental performance of our sites and our customers.

In line with our values of innovation, improvement and sustainability, we support all initiatives in favor of environmental protection, sustainable water management and pollution prevention.

Lectra's Executive Committee and management are committed to implementing this approach, and we encourage everyone at Lectra to contribute.

Daniel Harari
Chairman and Chief Executive Officer